

THE VICTORIAN GEOLOGIST



April 2010

THE GEOLOGICAL SOCIETY OF AUSTRALIA
Victoria Division

Annual General Meeting

Thursday 29th April at 6:15 p.m.
see inside for committee nomination form

Serpentinites, Mantle Convection and Gold Mineralisation

Dr Mark Kendrick

School of Earth Sciences, The University of Melbourne

Fritz Loewe Theatre, Earth Sciences Building, University of Melbourne

Preceded at 5.30pm by drinks and nibbles in the tea-room, 4th floor. Cost \$2

Serpentinites form when mantle rocks are hydrated on the seafloor. Subduction of these rocks then provides a critical link between volatiles (H₂O, Cl) in the Earth's surface hydrosphere and atmosphere, and primordial or recycled volatiles in the Earth's mantle. Serpentinites are of additional interest because together with altered-oceanic basalts they are a possible source of gold-related mineralising fluids in orogenic belts. The noble gas and halogen composition of serpentinites provides valuable insights that help resolve controversies concerning the nature of mantle convection and the origin of gold mineralisation.

**GEOLOGICAL SOCIETY OF AUSTRALIA Incorporated**

ABN 93 652 757 443

Registered Office Suite 61, 104 Bathurst Street Sydney NSW 2000 Australia

Phone: (02) 9290 2194 Fax: (02) 9290 2198. Web: www.gsa.org.au**Victoria Division**

GPO Box 2355 Melbourne, Victoria 3001

Web: www.vic.gsa.org.au/Division Chairman: David Cantrill Phone (03) 9252 2301 david.cantrill@rbg.vic.gov.au**2010 Annual General Meeting
of the Victoria Division of the Geological Society of Australia**

Notice of Meeting

The 2010 Annual General Meeting of the Victoria Division of the Geological Society of Australia will be held at 6:15 p.m. on Thursday 29th April 2010 in the Fritz Loewe Theatre at the University of Melbourne (to be followed by the regular monthly address).

David Cantrill will present his Chairman's Report for 2009 – 2010 and the meeting will elect a new Geological Society Victoria Division Committee for 2010 – 2011.

Agenda

1. Minutes from 2007–2008 of the GSA Victoria Division AGM on Thursday 30th April 2009.
2. GSA Victoria Division Chairman's Report for 2009–2010
3. GSA Victoria Division Financial Report for 2009–2010
4. Bicentennial Gold 88 Endowment Report for 2009–2010
5. Heritage Subcommittee Report for 2009–2010
6. Awards Committee Report for 2009–2010
7. Election of Committee Members for 2009–2010
8. Other business.

A. Seymon

Secretary of the Division, 9th April 2010

Minutes of the 2009 GSA Victoria Division Annual General Meeting

1. Opening: time and place
 - a. The meeting opened at 6.30 pm on Thursday 30th April 2009 in the University of Melbourne Fritz Lowe Theatre
2. Minutes of the previous meeting on Thursday 24th April 2008
 - a. Minutes were taken as read. Moved: Noel Schleiger; seconded: Gerhard Krummei.
3. Chairman's report for 2008-2009
 - a. David Cantrill presented his Chairman's Report for 2008 – 2009 and his report was accepted by the meeting. Moved: David Moore; seconded: Fons VandenBerg.
4. Treasurer's report for 2008-2009
 - a. Stephen Gallagher was not in attendance. Have audited accounts for 2007. Unaudited financial statements for the year end December 2008. A proper set of audited accounts will go into the next newsletter. This was

accepted by the meeting. Moved: Fons VandenBerg; seconded: Neil Philips.

- b. Fons VandenBerg congratulated the advisors on keeping losses so low in such dire economic circumstances.
- c. Gerhard Krummei congratulated the Treasurer for the first set of accounts presented at the AGM in years. GK also questioned the benefit of imputation credits. DC replied that franking credits are the tax benefit claimed back as imputation credits. These are handled at the level of the Federal Division.
- d. Neil Philips questioned whether there was the right balance between expenditure and banking, and whether there was scope for a major project? DC commented that the finances are sitting healthy. The committee would look at the potential for a major project, keeping in mind that the Geology of Victoria needs updating when stock runs down.
- e. GK commented that there were two options for funds. Live off earnings; or hoe into capital. Need to view in terms of long term survival. DC replied that the organization does largely live off earnings.

5. Bicentennial Gold 88 Working Group report for 2008-2009

- a. Gerhard Krummei presented the Bicentennial Gold 88 report for the year ended 2008. Have allocated another \$19k for distribution, and will be advertising these funds in TAG and AusIMM bulletin from the end of June. The report was accepted by the meeting. Moved: David Moore; seconded: Noel Schleiger.

6. Geological Heritage Subcommittee report for 2008-2009

- a. Sue White was absent for this meeting, however DC tabled the geological heritage subcommittee report for the year ended 2008. This was accepted by the meeting. Moved: Bernie Joyce; seconded: Leon Costermans.

7. Division Awards Subcommittee report for 2008-2009

- a. Ingrid Campbell was absent for this meeting. DC tabled the awards subcommittee report for the year ended 2008. The report was accepted by the meeting. Moved: Fons VandenBerg; seconded: John Webb.

8. Election of the Victoria Division Committee for 2008 – 2009

- a. The following members of the Victoria Division were elected or appointed to form the Division's Committee for 2009 – 2010:

Division Officers

Chairman	David Cantrill
Vice chairman	
Secretary	Adele Seymon
Treasurer	Stephen Gallagher

Division Committee Members

David Cantrill	Division Chairman
Vacant	Division Vice chairman
Adele Seymon	Division Secretary
Stephen Gallagher	Division Treasurer
Ingrid Campbell	Division Awards Subcommittee Chairman
Vacant	Division Membership Subcommittee Chairman
David Moore	Division Investments Administrator
Vacant	Division Newsletter Editor
Alison Fairmaid	Melbourne University, ESPG (Earth Sciences Postgraduate Group) Representative, Newsletter Assistant
Lindsay Thomas	Division Webmaster
Noel Schleiger	Division Education Subcommittee Chairman
Sue White	GSA Heritage Committee Chairman

Affiliates

Gerhard Krummei	Bicentennial Gold 88 Working Group Chairman
-----------------	---

- b. DC commented that the committee intends to look at superfluous committee positions over the next 12 months.

9. Other business

- a. Gerhard Krummei observed that the AGM attendees consisted of 99% old stalwarts of the organisation. There were various societies at the universities in Victoria; could these be brought into the organisation in some way?

Could the committee think about this?

AF commented that the University of Melbourne post-graduate group didn't hold regular meetings. The same kind of group should exist at Monash University.

DC raised the point that GSAV has over 300 members – yet it struggles to get 10% of its members at the monthly meetings.

LC wondered if the society was truly representing its members. There is a need to have up-to-date and relevant speakers to attract industry members.

John Webb commented that the hydrogeologists committee organise a breakfast in the city, which attracts a different demographic.

10. Closure

- a. The meeting closed at 7.10 pm.



AESc
australian earth sciences
convention

Earth Systems:

change
sustainability
vulnerability

4-8 July 2010

**National Convention Centre
Canberra**

Nominations for 2010 Annual General Meeting

The AGM will be held on the 29th of April. Nominations are open for executive positions in the committee, along with general committee member positions (see back page). We encourage you to consider nominating yourself or someone else. If you have any questions about what the committee does and what the positions entail, please feel free to contact any of the committee members listed on the last page of this newsletter, or emailing our secretary Adele at adele.seymon@dpi.vic.gov.au

2010-2011 GSAV Committee Nomination Form

I nominate: _____ For the position of: _____

Nominator: _____ Seconded by: _____

All nominations will be presented and voted upon at the GSAV AGM on 29th April, 2010, commencing at 6:15 pm.

Please detach and mail this completed form specifying your 2010-2011 GSAV Committee nomination no later than 23rd April to:

The Geological Society of Australia Inc. (Victoria Division)
GPO Box 2355
Melbourne VIC 3001

Alternatively you can bring your form along to the meeting!

MEMBER CONTRIBUTIONS

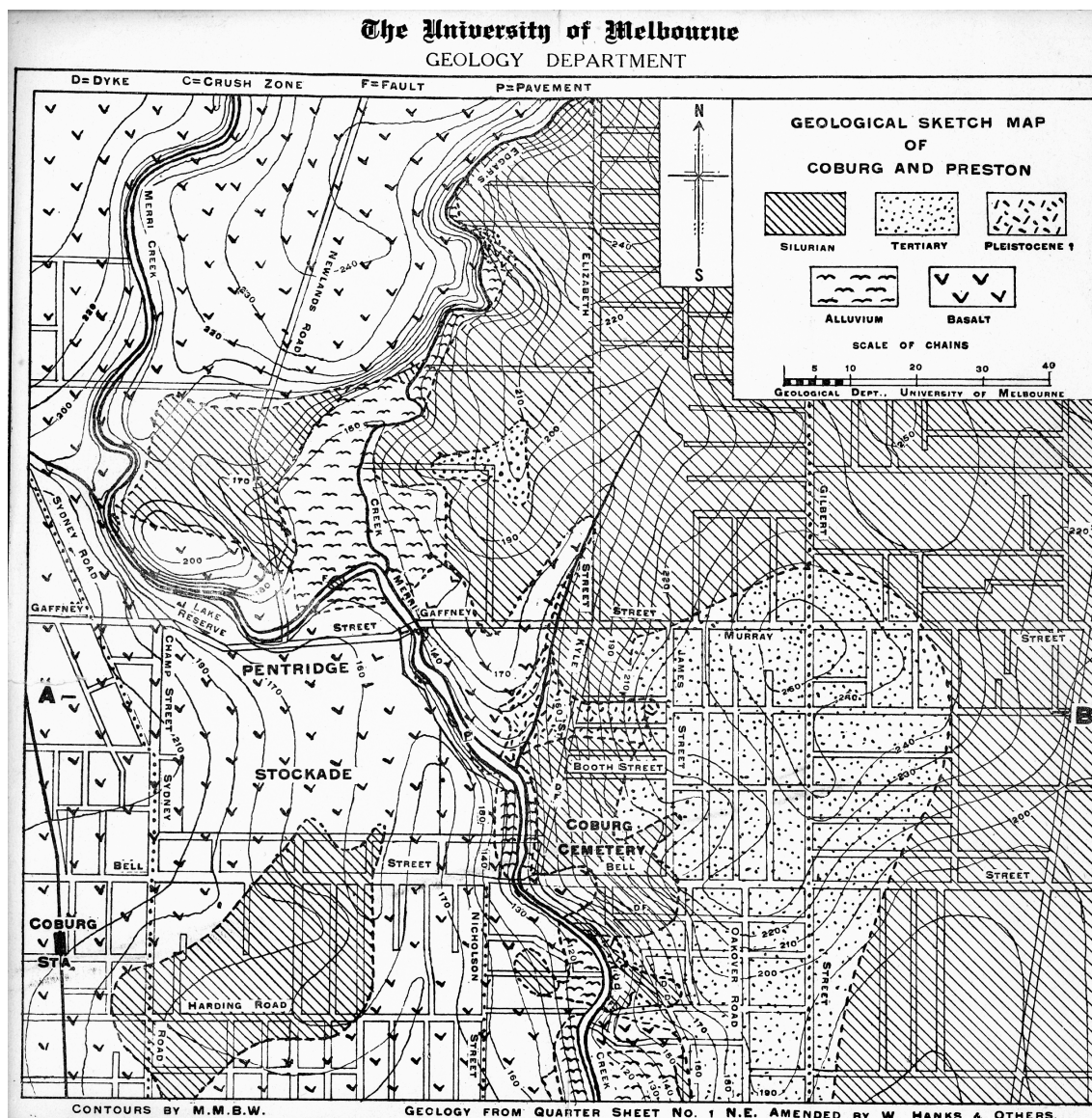
An artefact unearthed

The simple geological map shown here was part of the teaching armory of The University of Melbourne in the early days of last century. The image was scanned from an original found among papers by Lindsay Thomas, but he recollects these maps only as a material stored but no longer used.

It was presumably used as an exercise to construct a cross-section between A and B, but with the bonus that the ground was familiar northern suburbs territory, not an anonymous textbook location.

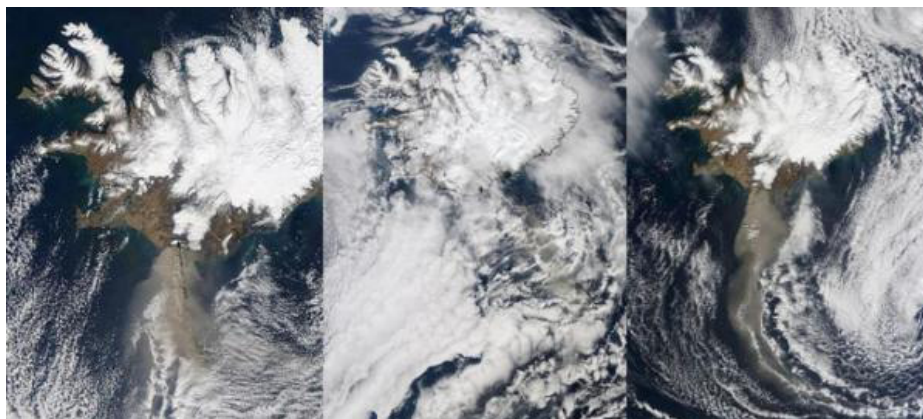
The "editor", W. Hanks, was a foundry owner in Coburg - coincidentally, his son Bill and Lindsay were members of the same smallbore rifle club during the 1960s - and reportedly carried out experiments on melting of basalts by heating them up in his foundry crucibles!

Does anyone out there recall using this teaching aid? There were certainly others stored on the shelves back then - does anyone out there have other examples (new or used)?



Two NASA Satellites Capture Eyjafjallajökull's Ash Plume

ScienceDaily



ScienceDaily (Apr. 19, 2010) — NASA's Aqua and Terra satellites fly around the world every day capturing images of weather, ice and land changes. Over the last three days these satellites have provided visible and infrared imagery of the ash plume from the Eyjafjallajökull volcano in Iceland.

Eyjafjallajökull is pronounced similar to "EYE-a-fyat-la-yu-goot," and it is still spewing ash into the atmosphere. Volcanic eruptions are important sources of gases, such as sulphur dioxide (SO₂) and volcanic ash (aerosols) in the atmosphere.

On Saturday, April 17 at 13:20 UTC (9:20 a.m. EDT), Aqua captured a visible image of the ash plume so clearly that in the satellite image a viewer could see the billowing cloud spewing from the volcano and blowing almost due south before turning east over the Atlantic Ocean.

On Sunday, April 18 at 12:05 UTC (8:05 a.m. EDT), NASA's Terra satellite flew over the volcano and captured an image of the brown ash cloud mostly obscured by higher clouds. The brown plume was partly visible underneath the high clouds.

By Monday morning, April 19 at 12:50 UTC (8:50 a.m. EDT) the high clouds had cleared, and the brown line of spewed volcanic ash was visible once again blowing south, then turning east toward the United Kingdom.

The ash cloud basically consists of fine particles of pulverized rock. Volcanic ash is a rare but potentially catastrophic hazard to aviation. Encounters with volcanic ash while in flight can result in engine failure from particulate ingestion and viewing obstruction of the cockpit widescreen from etching by the acidic aerosols. Volcanic Ash Advisory Centers were established to monitor the air space in areas prone to eruptions and to issue volcanic ash warnings.

from: <http://www.sciencedaily.com/releases/2010/04/100419162314.htm>

Volcanic Ash Research Shows How Plumes End Up in the Jet Stream

A University at Buffalo volcanologist, an expert in volcanic ash cloud transport, published a paper recently showing how the jet stream -- the area in the atmosphere that pilots prefer to fly in -- also seems to be the area most likely to be impacted by plumes from volcanic ash. See:

"Volcanic plumes and wind: Jet stream interaction examples and implications for air traffic" in the *Journal of Volcanology and Geothermal Research*.

FORTHCOMING SEMINARS AND EVENTS

to be presented at
GSA (Victoria Division) meetings

Note: unless otherwise indicated, all 2010 talks will be held in the
Fritz Loewe Theatre, Earth Sciences Building, University of Melbourne.

-
- | | |
|----------|--|
| April 29 | Annual General Meeting

Dr. Mark Kendrick , Serpentinites, mantle convection and gold mineralisation |
| May 27 | TBA |
| June | Royal Society of Victoria and the Geological Society of Australia (Victoria Division) present:
The ANNUAL AW HOWITT LECTURE

more details in the next newsletter |
-

Something interesting to share? Want to see your name in print?

Don't be bashful, contribute to the GSA(V) monthly newsletter!

If there are any events, happenings, news, or views that would be of interest to the membership, please send your details and information to Peter Hoiles at p.hoiles@pgrad.unimelb.edu.au

We'd be glad to hear from you

Visit the GSAV on www.vic.gsa.org.au or the GSA on www.gsa.org.au

• Renewing your GSA membership is easy - it can now be done online. •

CONSIDER CONTRIBUTING TO TAG!

It is member contributions which make TAG a member magazine—please keep the contributions coming and assist with informing all of the membership (not just your Division) about your activities.

Please send your news to: tag@gsa.org.au



GSA (VICTORIA DIVISION) COMMITTEE

Please address all correspondence to the GSA Victoria Division
GPO Box 2355, Melbourne, VIC, 3001
Internet address: www.vic.gsa.org.au

OFFICE BEARERS

Chair:	David Cantrill	9252 2301 (BH)
Vice-chair:	position vacant	
Secretary:	Adele Seymon	9658 4523 (BH)
Treasurer:	Stephen Gallagher	8344 6513 (BH)

COMMITTEE

Alison Fairmaid	8344 9980 (BH)
Erin Matchan	8344 7672 (BH)
David Moore	0409 911 120
Peter Hoiles	8344 9980 (BH)
Noel Schleiger	9435 8408
Lindsay Thomas	0427 354 828
Susan White	9328 4154

SUBCOMMITTEE

CONTACTS

Awards:	Ingrid Campbell	9486 7160
Bicentennial Gold:	Gerhard Krummei	9820 2595
Education:	Noel Schleiger	9435 8408
Heritage:	Susan White	9328 4154
Newsletter:	Peter Hoiles	8344 9980
	Alison Fairmaid	8344 9980
Webmaster:	Lindsay Thomas	0427 354 828

OTHER CONTACTS

Geology of Victoria:	Bill Birch	9270 5049 (BH)
----------------------	------------	----------------

Newsletter deadline

First Friday of the month except Dec & Jan
p.hoiles@pgrad.unimelb.edu.au, or
a.fairmaid2@pgrad.unimelb.edu.au

GSA Inc - for membership and subscription enquiries or change of address:

Business Office: Geological Society of Australia, Suite 61, 104 Bathurst Street, Sydney NSW 2000

Email: info@gsa.org.au Tel: (02) 9290 2194 Fax: (02) 9290 2198

Print Post No. PP381827/0025

Registered Publication No. VBH 2135

If undelivered return to:

The Geological Society of Australia Inc.

GPO Box 2355

Melbourne VIC 3001

PRINT POST APPROVED